



QGIS

Attribute Tables (02.11)

William Raynolds

Jared Koller

ABOUT QGIS

QGIS is a free and open source Geographic Information System (GIS), or geodatabase, licensed under the GNU General Public License. QGIS runs on Linux, Unix, Mac OSX, Windows and Android and supports numerous vector, raster, and database formats and functionalities. QGIS users can view, edit, and analyze spatial and locational information through its free software toolkit.

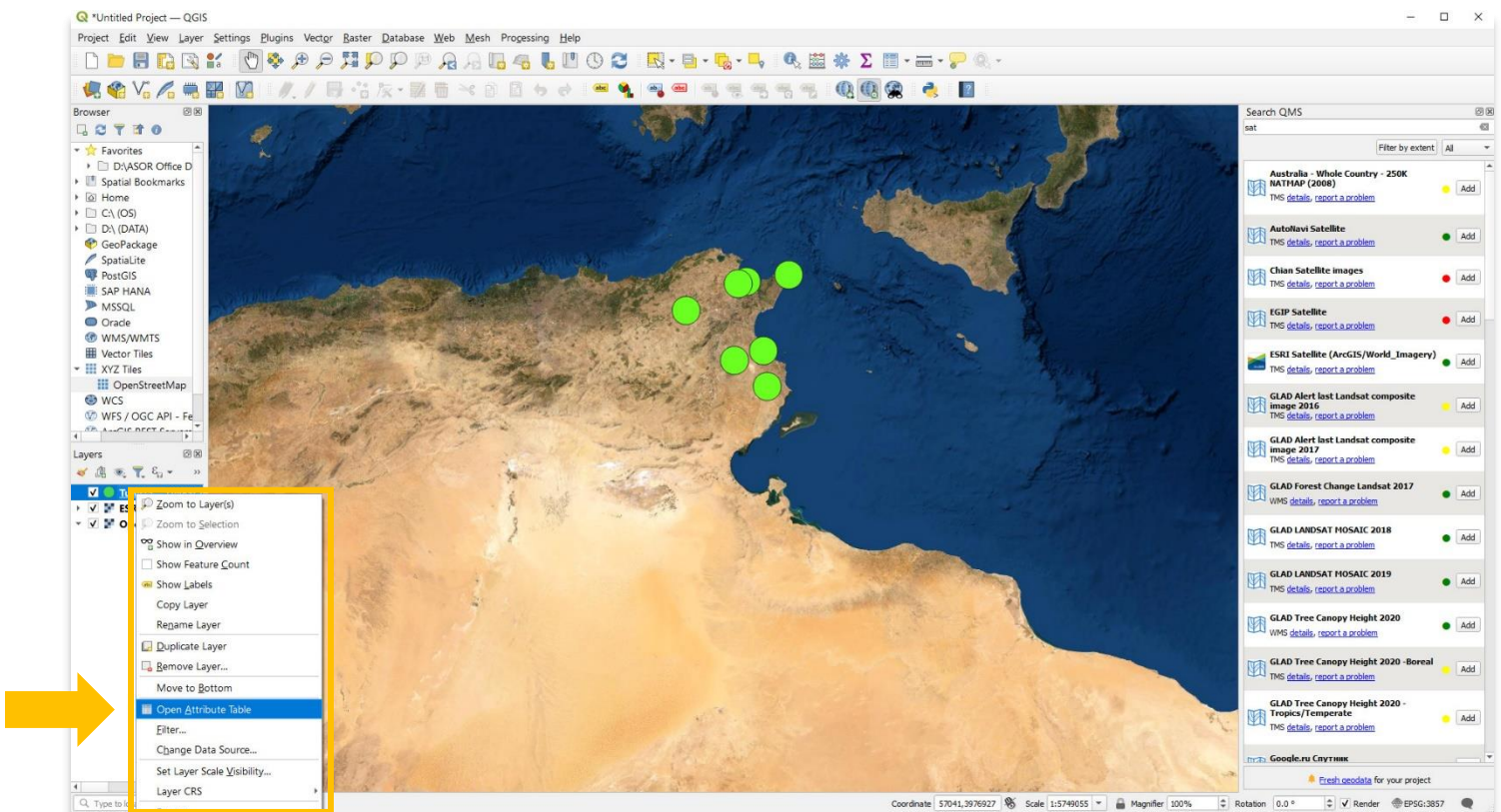
Download QGIS here: <https://qgis.org/>

Documentation: <https://docs.qgis.org/3.16/en/docs/index.html>

This **ASOR Tutorial (02.11)** will provide an overview of attribute tables in QGIS. The attribute table displays information on features of a selected layer. Each row in the table represents a feature (with or without geometry), and each column contains a particular piece of information about the feature. Features in the table can be searched, selected, moved or even edited.

ATTRIBUTE TABLES

1. The attributes (or descriptive information) for any layer can be viewed through the **Attribute Table**. To open the **Attribute Table** right-click on the layer, then select **Open Attribute Table**.



2. The **Attribute Table** will appear. You will notice that this table mirrors the CSV file that you imported into QGIS from your KoboToolbox project in [ASOR Tutorial 02.08 \(Importing KoboToolbox Data\)](#).

Tunisia_-_UNESCO-Inscribed_World_Heritage_Sites_-_all_versions_-_labels_-_2022-04-11-19-32-13 — Features Total: 7, Filtered: 7, Selected: 0

	start	end	Site Name	Description	Longitude	Latitude	ate of Inscriptio	Criterion	Criterion/i	Criterion/ii	Crit
1	11 Apr 2022 ...	11 Apr 2022 ...	Amphitheatr...	The impressi...	10.70694	35.29639	1979	iv vi	0	0	
2	11 Apr 2022 ...	11 Apr 2022 ...	Archaeologic...	Carthage wa...	10.32333	36.85278	1979	ii iii vi	0	1	
3	11 Apr 2022 ...	11 Apr 2022 ...	Dougga / Th...	Before the R...	9.22028	36.42361	1997	ii iii	0	1	
4	11 Apr 2022 ...	11 Apr 2022 ...	Kairouan	Founded in 6...	10.10389	35.68167	1988	i ii iii v vi	1	1	
5	11 Apr 2022 ...	11 Apr 2022 ...	Medina of So...	Sousse was a...	10.63861	35.82778	1988	NULL	NULL	NULL	
6	11 Apr 2022 ...	11 Apr 2022 ...	Medina of Tu...	Under the Al...	10.16667	36.81667	1979	ii iii v	0	1	
7	11 Apr 2022 ...	11 Apr 2022 ...	Punic Town o...	This Phoenici...	11.09917	36.94639	1985	iii	0	0	

Show All Features

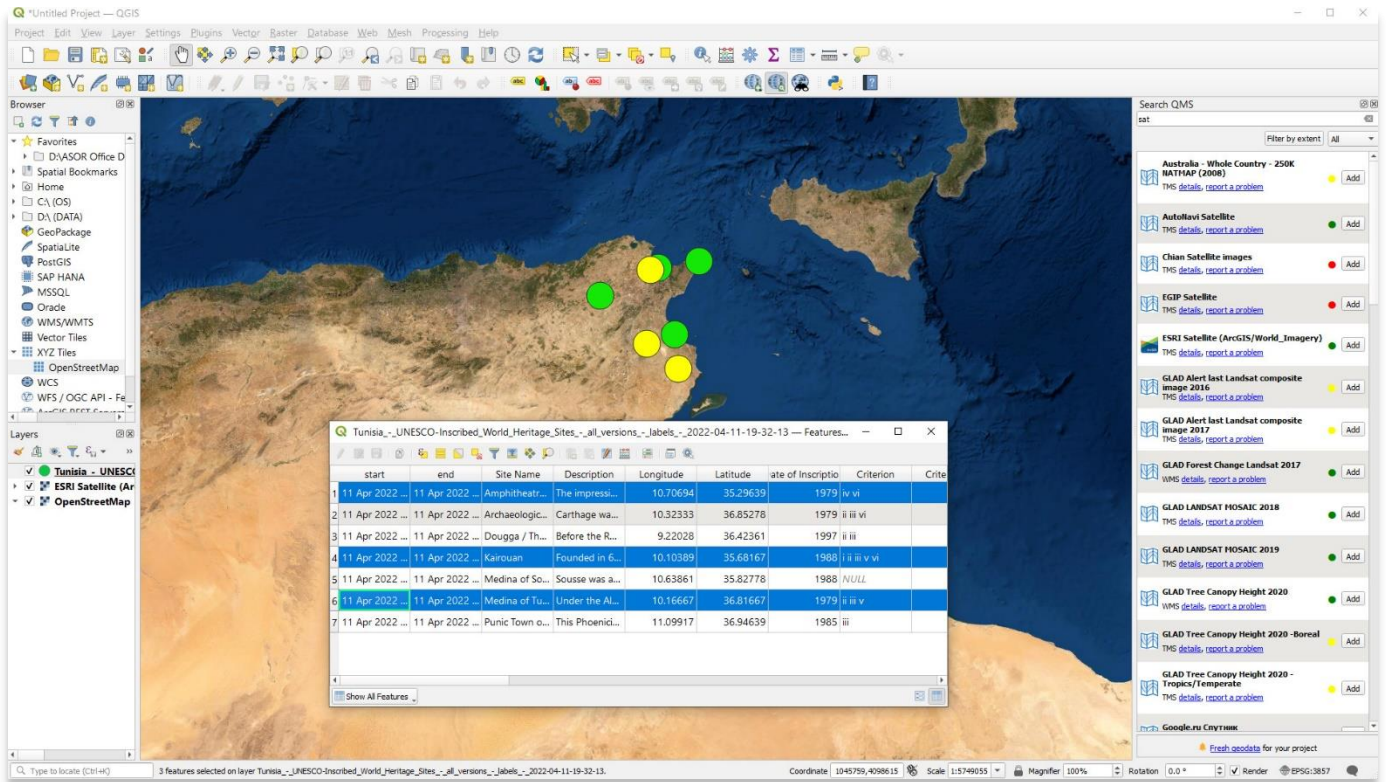
3. Attribute data can be edited and reordered.

Tunisia_-_UNESCO-Inscribed_World_Heritage_Sites_-_all_versions_-_labels_-_2022-04-11-19-32-13 — Features Total: 7, Filtered: 7, Selected: 0

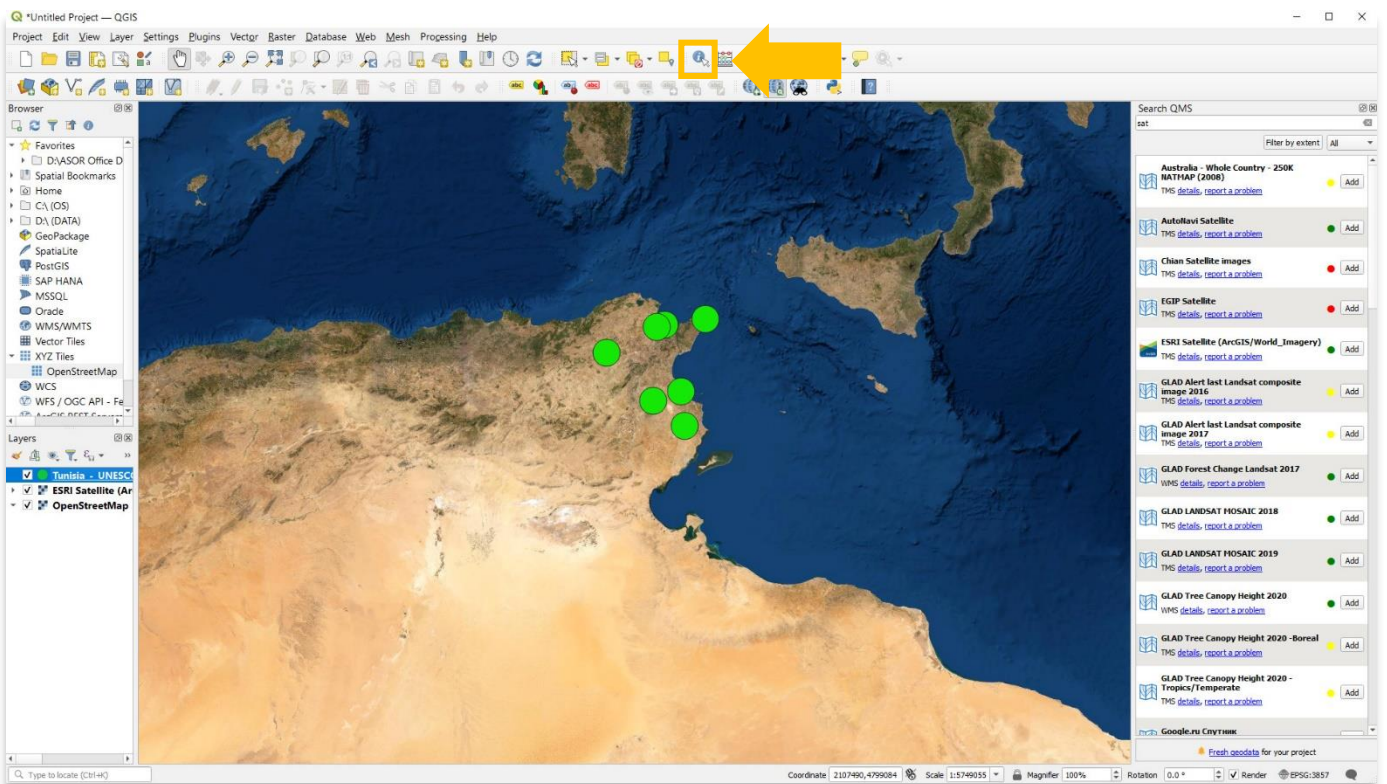
	start	end	Site Name	Description	Longitude	Latitude	Date of Inscripti	Criterion	Criterion/i	Criterion/ii	Crit
1	11 Apr 2022 ...	11 Apr 2022 ...	Amphitheatr...	The impressi...	10.70694	35.29639	1979	iv vi	0	0	
2	11 Apr 2022 ...	11 Apr 2022 ...	Archaeologic...	Carthage wa...	10.32333	36.85278	1979	ii iii vi	0	1	
3	11 Apr 2022 ...	11 Apr 2022 ...	Medina of Tu...	Under the Al...	10.16667	36.81667	1979	iii v	0	1	
4	11 Apr 2022 ...	11 Apr 2022 ...	Punic Town o...	This Phoenici...	11.09917	36.94639	1985	i	0	0	
5	11 Apr 2022 ...	11 Apr 2022 ...	Kairouan	Founded in 6...	10.10389	35.68167	1988	ii iii v vi	1	1	
6	11 Apr 2022 ...	11 Apr 2022 ...	Medina of So...	Sousse was a...	10.63861	35.82778	1988	NULL	NULL	NULL	
7	11 Apr 2022 ...	11 Apr 2022 ...	Dougga / Th...	Before the R...	9.22028	36.42361	1997	iii	0	1	

Show All Features

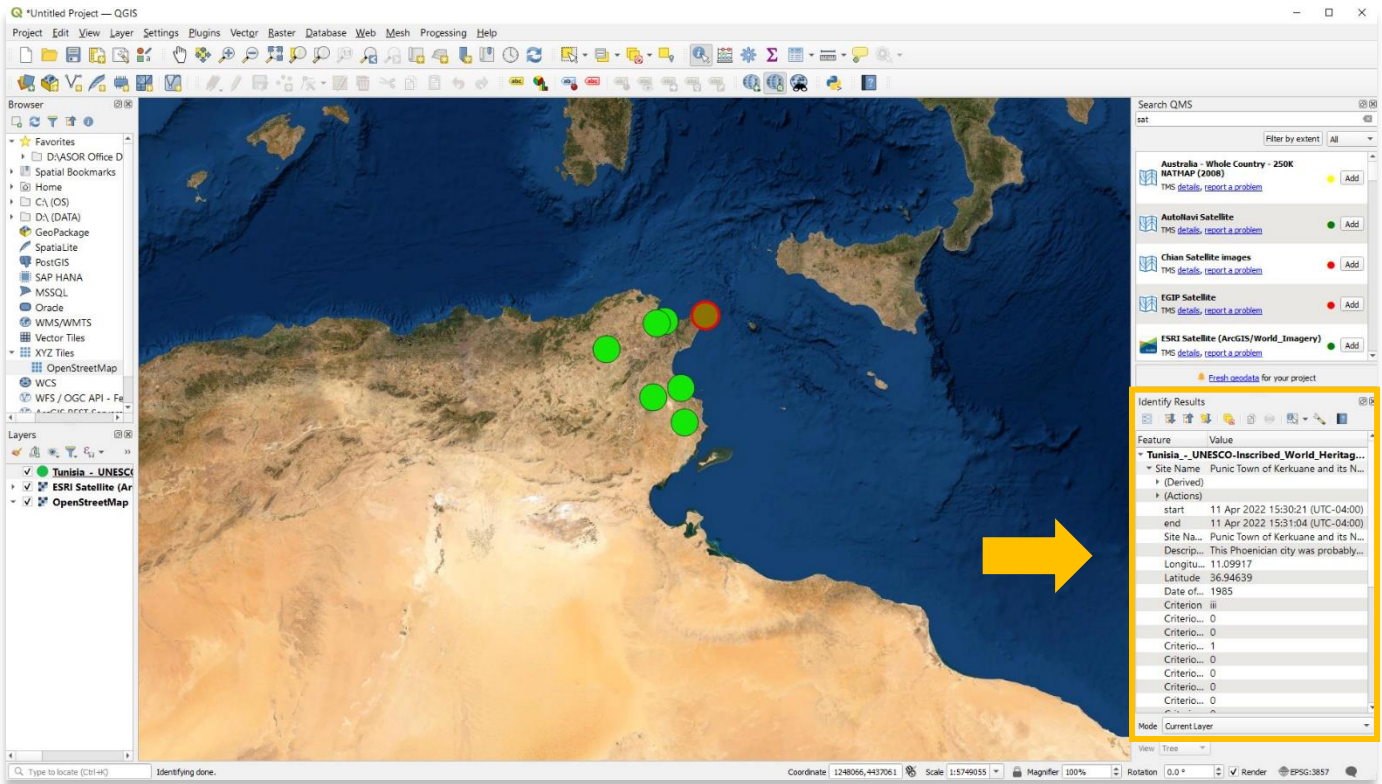
4. When highlighting a row or multiple rows, you will see those corresponding points change color on the map.



5. Another method for viewing the attribute data of a specific point (or line and polygon) is to use the Identify Features tool in your toolbar.



6. The attributes for the point that was selected will appear in an **Identify Results Panel**.



For more detailed information on anything within this tutorial, please visit QGIS Documentation:

<https://docs.qgis.org/3.16/en/docs/index.html>



VIEW ALL ASOR TUTORIALS FOR FREE

asor.org/chi/chi-tutorials